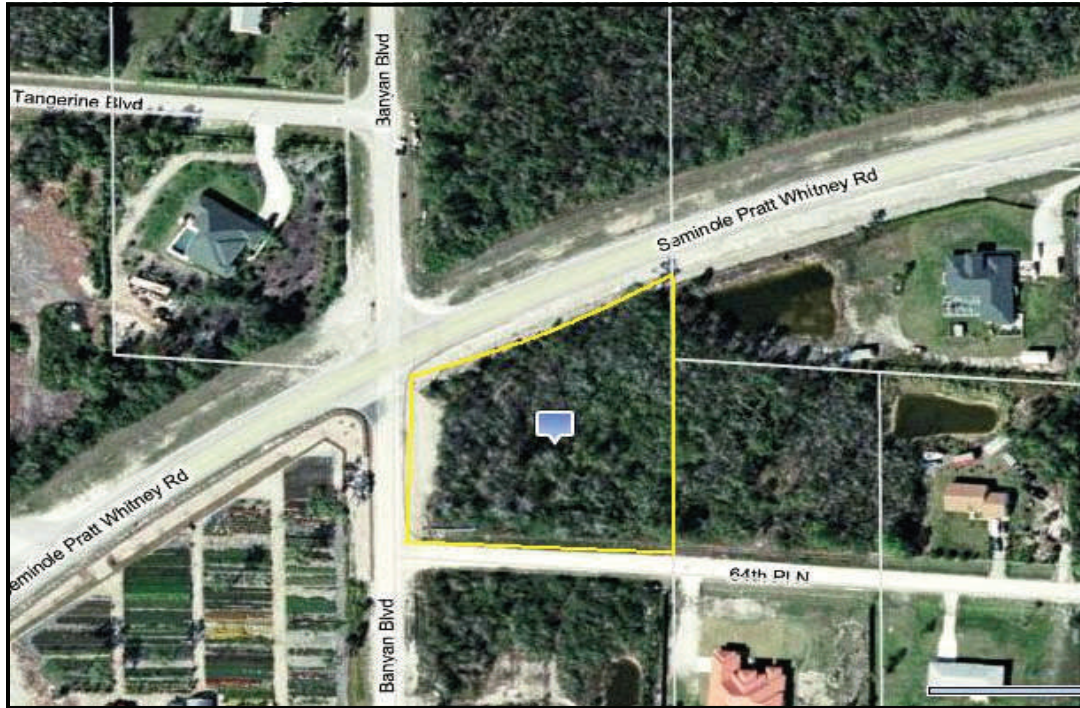


# Pratt Land

## Seminole Pratt, West Palm Beach



- **Raw Land**
- **Lot Size 1.92 Acres**
- **Great Location with direct Frontage on Seminole Pratt And Whitney Rd**
- **Heavy Traffic Count**
- **Zoned AR**

**JENKS  
COMMERCIAL  
CORP.**

12804 Meadowbreeze Dr.  
Wellington, FL 33414

Contact: Wes Jenks  
Phone: 561-909-7217  
Fax: 561-422-3860  
Email: [weks96@msn.com](mailto:weks96@msn.com)  
[www.jenkscommercial.com](http://www.jenkscommercial.com)