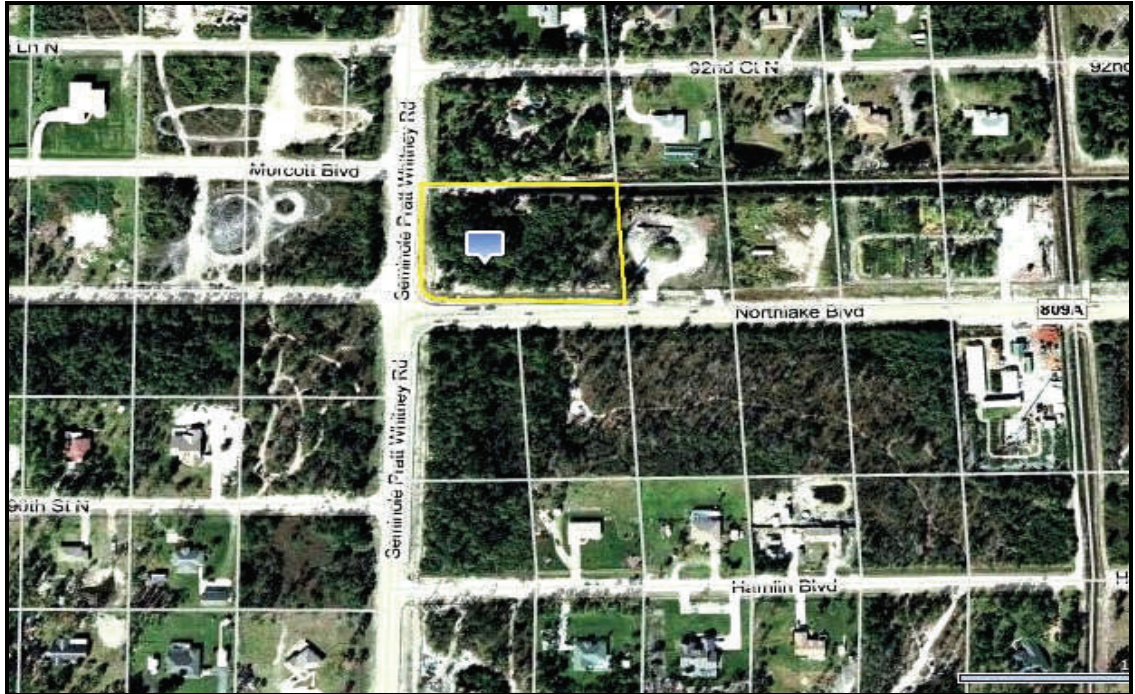


Northlake & Pratt Land

Northlake, West Palm Beach



- **Raw Land**
- **Lot Size 2.8Acres**
- **Great Location with direct Frontage on Northlake and Seminole Pratt Whitney**
- **Heavy Traffic Count**
- **Ideal location for Commercial Development**

**JENKS
COMMERCIAL
CORP.**

12804 Meadowbreeze Dr.
Wellington, FL 33414

Contact: Wes Jenks
Phone: 561-909-7217
Fax: 561-422-3860
Email: weks96@msn.com
www.jenkscommercial.com